

**Warm welcome!**  
**Nice to have you here!**

February 2023

# Let us introduce ourselves!

**PMS** – your partner for success



As an expert for advanced partial and turnkey solutions in electrical and automation engineering and installation, the **PMS Group** provides support for national and international projects of industry customers as well as for meeting specific requirements.



## History

An adventure from the beginning



## Sales & Employees

Both essential elements of success



## Awards & Certificates

Signs of a success company history



## Competences & Services

Our wide range



## Partnerships

Strong partners are the key to success!



## References

A selection of already satisfied customers



## Current developments

For PMS, innovation means having ideas and turning them into reality

# The PMS executive management

Authorised Officer

**Martin  
Grünwald**

Authorised Officer

**Andreas  
Hundsbichler**

Managing Director

**Franz  
Grünwald**

Authorised Officer

**Wolfgang  
Sattler**

Authorised Officer

**Martin  
Blümel**



**„We make bold decisions and take  
responsibility.“**

# The PMS family

## Our focus is on people



### **Employees are an essential element of our success**

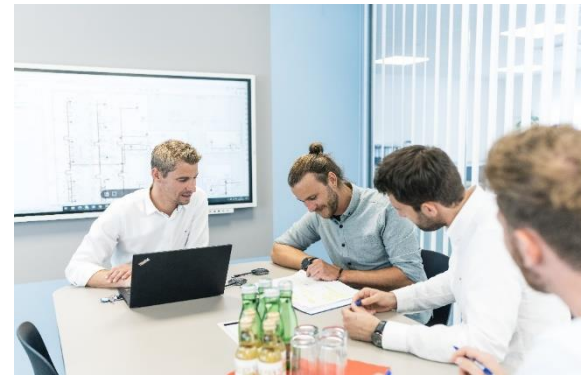
An above-average connection of our employees is the result of a good work-life balance which is due to flexible working hours and involvement of families at company events. Another benefit are free delicious meals for our employees on a daily basis.

Responsible employee management and development are the hallmarks of our appreciative and informal corporate culture and are strengthening the cohesion within the PMS-Team.



### **Corporate culture - values**

Appreciation, honesty, openness, fairness, eye level, solidarity, trust, decisiveness and courage are the essentials of our corporate culture. The practiced values are shaping the daily interaction and provide orientation.

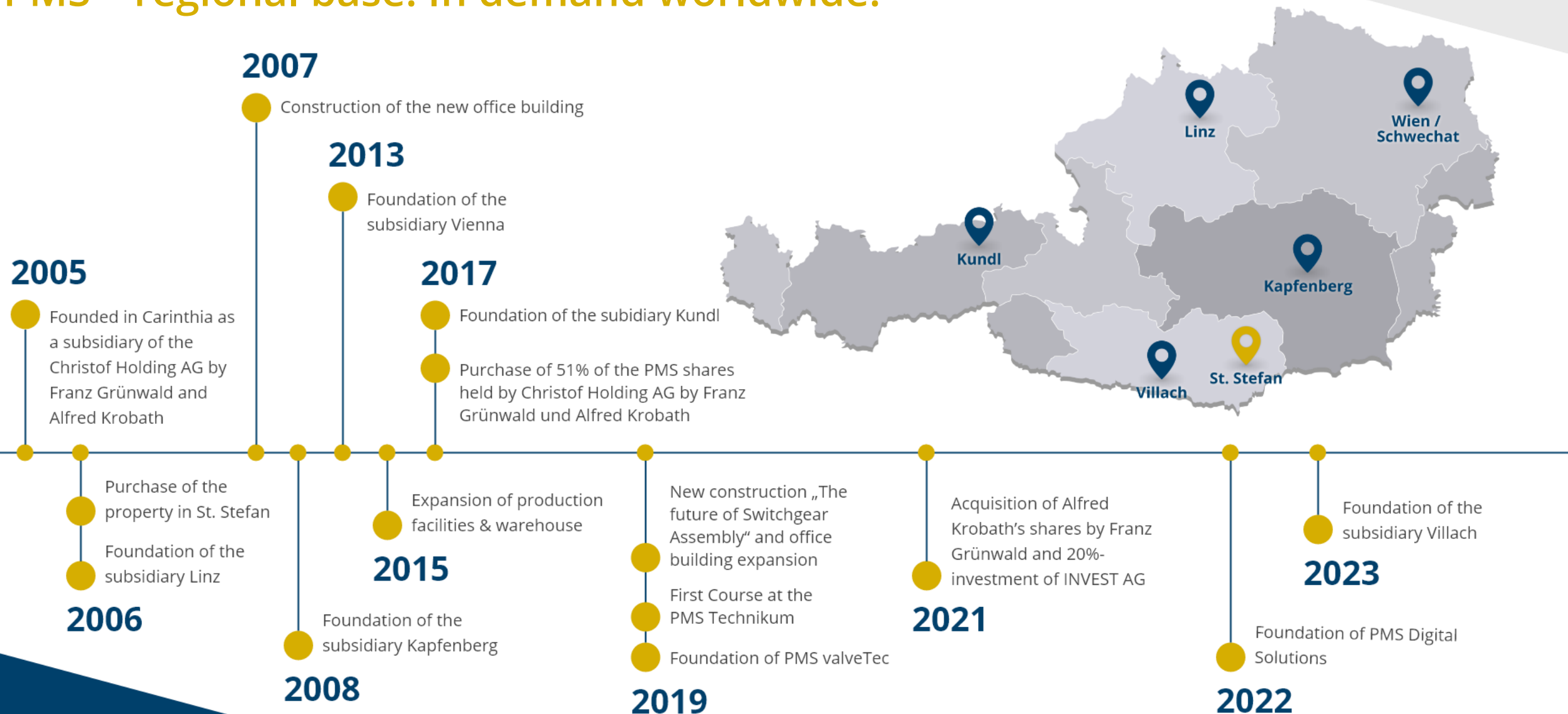


### **Development opportunities & future prospects**

Within the PMS Academy we emphasize individual support of our employees, qualitative apprentice training and further education – resulting in TOP qualified employees who have varied career opportunities.

# Success through market presence

PMS – regional base. In demand worldwide.



# PMS Group

## Successful Solutions



### PMS Elektro- und Automationstechnik GmbH

...your partner for advanced partial and turnkey solutions in electrical and automation engineering and installation. We provide support for national and international projects of industry customers as well as for meeting specific requirements.

### PMS valveTec GmbH

...your exclusive partner for valve services in Austria.

As a certified service partner for NELES we offer mechanical, pneumatic and electrotechnical services.

### PMS Digital Solutions GmbH

...your full-service provider for individual solutions and applications for projects relating to digitization and Industry 4.0.

The team at PMS Digital Solutions GmbH provide you with comprehensive support, starting with the development through to the implementation of your digitization measures up to making them successful.

### PSI – Powerful Solutions International GmbH

finds and supplies staff for industrial firms. Employees receive ongoing training in order to meet the demand for highly qualified personnel.





# Key figures 2017-2022

We are growing continuously

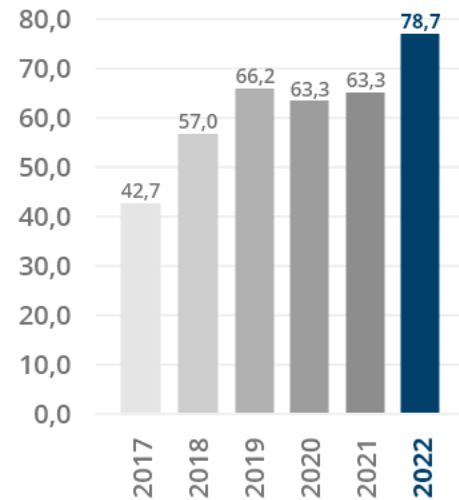
“

I want to define growth differently – it is not only about quantity in the sense of more and more but about quality in the sense of getting better and better. Our aim of development is to ensure excellence in all our corporate processes. Economic success will follow naturally.

”

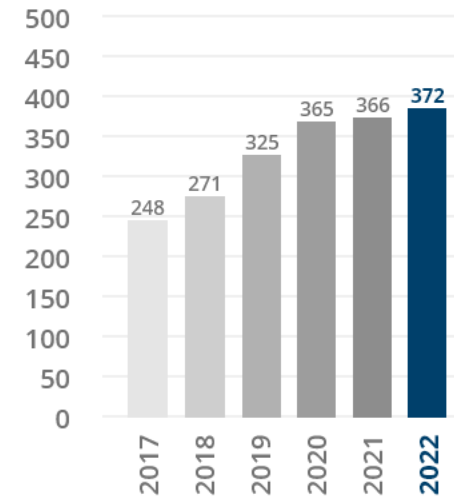
## Revenue

(in millions €)



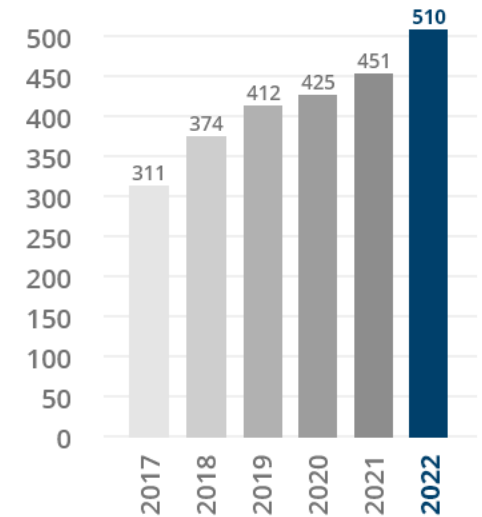
## Own personnel

(annual average)



## Total employees

(annual average)



# Awards & certificates

## Signs of a successful company history

**2011**

Most family-friendly company in Carinthia

Winner Austria's Leading Companies (Golden Central Structures)

**2014**

Winner Austria's Leading Companies (Golden Central Structures)

**2015**

EMAS Award „Best Environmental Manager“

**2016**

EMAS Award „Best EMAS Environmental Statement“

**2017**

Carinthian Innovation Award together with the cooperation CG4CP – Competence Group for Clean Production

**2019**

Primus Award in the category „Courage“

AVL Supplier Award in the category „Special Excellence“

Winner Austria's Leading Companies

**2020**

Winner TRIGOS Carinthia und TRIGOS Austria in the category „Regional Value Creation“

EMAS Award „Best EMAS Environmental Statement“

Winner Austria's Leading Companies

**2021**

Awarding of the municipal coat of Wolfsberg

### Certificates

- SIVACON Technology Partner
- Siemens Solution Partner
- EMAS III
- SCCP:2011
- EN ISO 14001:2015
- EN ISO 9001:2015
- EN ISO 50001:2011
- B&R Systempartner
- TÜV Süd Panelshop-Partner according to UL 508A and CAN/CSA C22.2 No. 286



# Sustainable business management

## How we interpret corporate responsibility



### Health and safety

In order to ensure that the topic is well-embedded in the management and to create awareness, inspections and site visits by the management take place at regular and planned intervals.



### Safety at work

We are constantly working to improve the occupational health and safety conditions for our employees. We always keep an eye on the long-term goal of "zero accidents at work".



### Environmental policy

As a modern, dynamic and forward-thinking company, PMS is committed to the highest quality, safety, environmental and energy efficiency standards. We are setting ambitious goals – finding customized solutions remains a fundamental principle.

“

**Operational health management – a major concern for our top management...**

”



# Our core competences

## We think in solutions

“

**Our customers benefit from our flexibility, extensive experience, comprehensive cross-sector knowledge and efficient project management.**

”



### Switchgear assembly

Starting with made-to-order production up to series manufacturing of switchgear assemblies or special tailor-made solutions - as your partner we offer everything under one roof while having many years of experience developing the optimum manufacturing solutions.



### Engineering/automation/project management

We believe that every project needs to be planned carefully according to the actual needs of each single customer while providing best support across the entire duration of the project: technical expertise, experienced project management while remaining flexible in every way.



### Power Engineering

Project planning, network analysis or medium-voltage protection testing: we are your partner regarding individual customer requirements. We help you to enhance competitiveness and to increase and implement energy and overall efficiency.



# Our core competences

## We think in solutions



### Industrial assembly

We offer short, medium and long-term support, consultation and above all reliable implementation for all aspects of industrial assembly. No matter where our customers are based, we're here to assist you worldwide.



### Service and maintenance

Focused on maintenance, improvement strategies or coordinating new projects – our portfolio covers a wide range of services. Getting to the heart of our customers' plants and production sequences is a major part of our service.



### Mechanical and systems engineering

We're a versatile mechanical and systems engineering partner who can give our customers interdisciplinary value and the confidence to plan ahead. When various requirements come together, this team stands out with all-round expertise in mechanical and systems engineering, safety technology and R&D services.



### EI&C for gas application and process technology

Thanks to our experience throughout the years we are specialized in meeting the needs of the petrochemical industry. We provide customized solutions with maximum safety and up-to-date expertise in standards and regulations in gas plants.

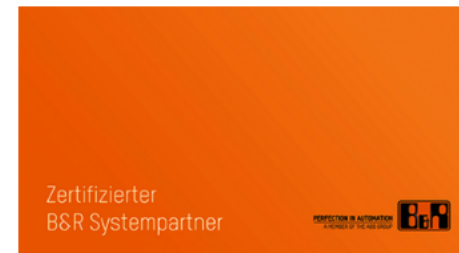


# Our partnerships

Strong partners are the key to success!



We tackle customer-specific electrical engineering and automation challenges every day. To maintain and hone our strength and core competence in the long run, we team up with strong partners.





# Our References

A selection of satisfied customers



# Current developments

## Our plan for the future

“

**For us, innovations means to be brave, open minded and creatively shaping the future.**

”



### PMS Technikum Lavanttal

Cooperation with FH-Kärnten: three „extended“ FH courses since 2019



Innovation Center:  
hub for innovation and technology management in the Lavanttal region



Founder's garage



### PMS Akademy

A platform for targeted human resources development in different subject areas from specialist know-how to personal growth. At the beginning the focus is on leadership training and coaching.



### Company of the future

We are giving priority to positioning ourselves as a modern and innovative company.

As pioneers in new trends and technologies our goal is their implementation for the benefit of our customers and employees.





# Contact

## PMS Group



### PMS Elektro- und Automationstechnik GmbH

PMS-Straße 1  
A-9431 St. Stefan/Lavanttal  
T: +43 (0)50 767- 0  
office@pms.at

### PMS valveTec GmbH

PMS-Straße 1  
A-9431 St. Stefan/Lavanttal  
T: +43 (0)50 767- 0  
office@pms.at

### PMS Digital Solutions GmbH

PMS-Straße 1  
A-9431 St. Stefan/Lavanttal  
T: +43 (0)50 767- 0  
office@pms.at

### PSI - Powerful Solutions International GmbH

Andersdorf 54  
A-9423 St. Georgen  
T: +43 664 80767 9485  
office@psi-austria.eu

## PMS Elektro- und Automationstechnik

### PMS Headquarter

PMS-Straße 1  
A-9431 St. Stefan/Lavanttal  
T: +43 (0)50 767- 0  
office@pms.at  
www.pms.at

### PMS Villach

Maria-Gailer-Straße 36  
9500 Villach  
T: 050 767-0  
office@pms.at

### PMS Linz

St. Peter-Straße 25/4  
4020 Linz  
T: +43 (0)50 767-4000  
office.linz@pms.at

### PMS Kundl/Tirol

Servicepark-Sandoz-Kundl  
Dr.-Hans-Bachmann-Str. 3a  
6250 Kundl  
T: +43 (0)50 767-6000  
office@pms.at

### PMS Kapfenberg

High-Tech-Park 23  
8605 Kapfenberg  
T: +43 (0)50 767-8000  
office.kapfenberg@pms.at

### PMS Wien/Schwechat

Eisteichstraße 16  
2320 Schwechat  
T: +43(0) 50 767-0  
office@pms.at



**ELEKTRO- UND  
AUTOMATIONSTECHNIK**  

---

GMBH